



AGROVITAL
SPlENdour-K

Environmentally friendly foliar N-P-K
fertiliser with Sulphur, Manganese and
Zinc



SPlENdour-K is a plant-friendly liquid foliar fertiliser providing an efficient N-P-K source with added Sulphur, Manganese and Zinc.

- Nitrogen **12.8%** (w/v)
- Phosphate (P₂O₅) **23%** (w/v)
- Potash (K₂O) **5.1%** (w/v)
- Sulphur (S) **1.3%** (w/v)
- Manganese (Mn) **0.64%** (w/v)
- Zinc (Zn) **0.64%** (w/v)

Nitrogen and Potash are supplied as a polymer to give phased release in easily usable form. Phosphate is in the orthophosphate form for direct use and Sulphur is supplied as Polysulphates. Manganese and Zinc are chelated to ensure quick uptake availability to the crop.

SPlENdour-K has a low salt index so will not cause scorch to leaves and is gentle on application machinery.

Benefits

Agro-Vital | SPlENdour-K

- **No Scorch**
- **Almost 100% uptake**
- **Tank mix with plant protection products**
- **Accurate application**
- **No volatilisation or leaching**

Soil applied, granular fertilisers can be subject to leaching and volatilisation or made unavailable in very dry conditions. They can also cause harm to the delicate balance of soil micro-organisms and soil chemistry. **SPlENdour-K** can be applied when the plants need it with conventional sprayer equipment and is tank mix compatible with a wide range of plant protection products.

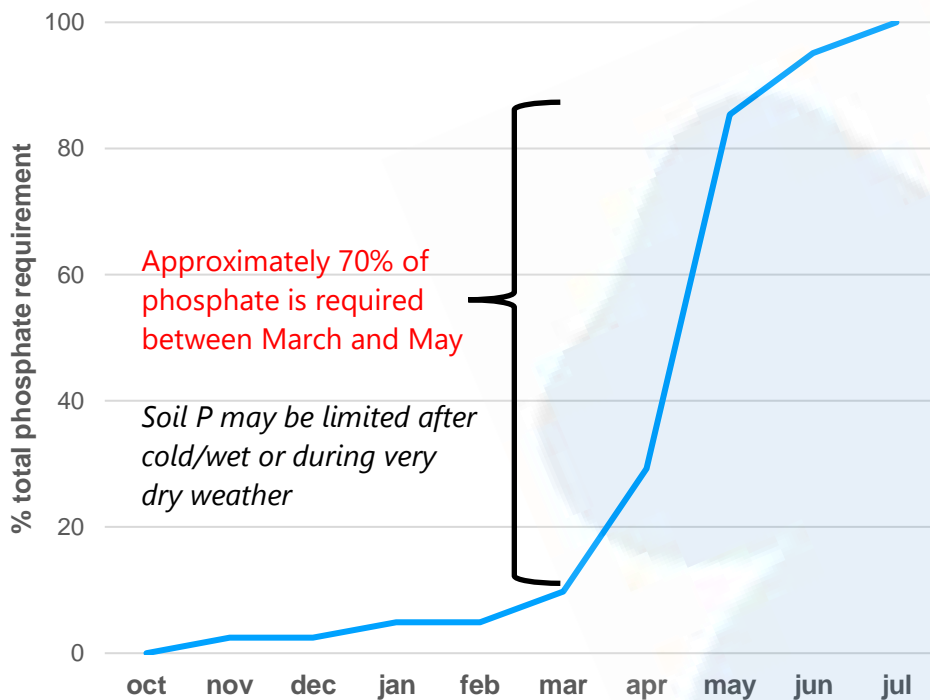
SPlENdour-K is based on plant-friendly raw materials so can be applied as a foliar spray with much greater efficiency than granular products but without the negative environmental impact.



*"Using **SPleNdour-K** on my sugar beet has boosted sugar yields "*

*Mr. Bonham
Arable Farmer*

Winter wheat phosphate requirement



Approximately 70% of phosphate is required between March and May

Soil P may be limited after cold/wet or during very dry weather

Using **SPleNdour-K**

For Cereals, Maize, OSR and brassica vegetables use a maximum of 20 L/ha

For maincrop potatoes use 10 – 20 L/ha at 10 – 14 day intervals

For sugar beet use 10 L/ha at 10 – 14 day intervals

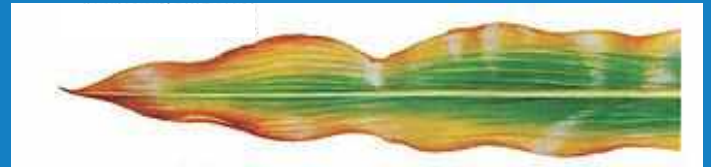
Water volume at least 200 L

Agro-Vital | **SPleNdour-K**

- **Phosphorus** (23% w/v) - ensure even crop maturation and increased Nitrogen use efficiency,
- **Potash** (5.1% w/v) - resist stress from pests and disease and aid translocation within the plant
- **Sulphur** (1.3% w/v) – an important component for building proteins
- **Manganese** (0.64% w/v) and **Zinc** (0.64% w/v) - essential micronutrients for developing grain size



Phosphate deficiency



Potassium deficiency



EM Agriton Ltd
Ebear Farm
Westleigh
EX16 7HN

T - 01823 673344
www.agriton.co.uk
info@agriton.co.uk

VAT no: 846847068
Company Registration: 05213435



GROUP



ANIMAL HUSBANDRY



HOME & GARDEN

Agriton, restoring nature's balance